

2017 IIHF ICE HOCKEY U18 WORLD CHAMPIONSHIP

Poprad & Spišská Nová Ves,
Slovakia, April 13 - 23, 2017

2017



ICE HOCKEY
U18 WORLD
CHAMPIONSHIP
SLOVAKIA

Poprad & Spišská Nová Ves

Governed by IIHF



www.IIHF.com



TEAM INFORMATION PACKAGE, EVENT OVERVIEW

2017 IIHF ICE HOCKEY
U18 WORLD CHAMPIONSHIP
POPRAD – SPISSKA NOVA VES
SLOVAKIA
APRIL 13 – 23, 2017

Obsah

1.	Welcome.....	3
2.	Championship Dates and Locations	4
3.	City of Poprad	5
3.1.	Transport	5
4.	City of Spisska Nova Ves	6
4.1.	Transport	6
5.	Accommodation and Services	7
5.1.	Accommodation overview	7
5.2.	Grand Hotel Bellevue	7
5.3.	Hotel Horizont Resort.....	8
5.4.	Hotel Sobota.....	9
5.5.	Hotel Aquacity Poprad.....	10
5.6.	Hotel Metropol.....	11
5.7.	Parkhotel Centrum	12
5.8.	Hotel Ćingov	13
5.9.	Parkhotel Ćingov.....	14
6.	Transportation.....	15
6.1.	Team Arrival and Team Hosts.....	15
6.2.	Transportation.....	15
7.	Services.....	15
7.1.	Ticketing	15
7.2.	Accreditation	15
7.3.	Video Distribution	16
7.4.	Electricity	16
7.5.	Team Service	16
8.	Medical Support Service.....	17
9.	Pre-event and Directorate meetings.....	18
10.	Game Information	18
10.1.	Training Camp.....	18
10.2.	Practice schedule.....	19
10.3.	Game schedule	21
10.4.	Awards.....	22
11.	Organizing committee & contact information	22
12.	Arena Maps & Layout.....	23

1. Welcome

Dear hockey friends and family.

It's a great honor for me to be able to welcome the U18 World Championship in our country after 15 years. The cities of Poprad and Spisska Nova Ves are our hockey bastions, where a number of players grew up who later represented Slovakia in the world.

Names like Peter Bondra, Radoslav Suchy or Lubos Bartecko from Poprad and also the winner of the Stanley Cup, Michal Handzus. In Spisska Nova Ves, several medal winners from the World Championships grew up, such as Stanislav Jasecko, Lubomir Vaic or Libor and Julius Hudacek.

For Slovakia it's a great honor and responsibility to prepare a championship, which will be seen by the participating teams as one of the best. The team which is in charge of the preparation has numerous experience with organizing not only youth tournaments, but also hundreds of international games and also the 2011 IIHF Ice Hockey World Championship, which was highly ranked in the highest circles of the IIHF.

I believe that the elite youth teams will find the Tatra's sporting environment, perfect conditions and the necessary comfort in order to focus solely on hockey. Annually, we also organize the U18 Ivan Hlinka Memorial Tournament, which has a great name in the world.

This World Championship will be undoubtedly organized at the highest level and all participating countries to whom I wish the best luck and success.

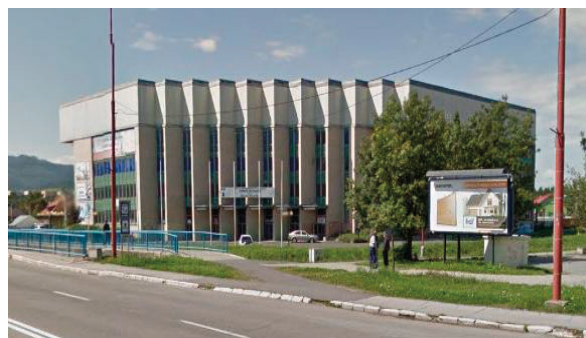
Make yourselves at home!



Ing. Martin Kohut
President of Slovak IHF

2. Championship Dates and Locations

Date of Championship:	April 13, 2017 – April 23, 2017	
Host Cities:	Poprad, Slovakia (Group A) Spišská Nová Ves, Slovakia (Group B)	
Participants:	Group A: FIN, CAN, SVK, SUI, LAT Group B: SWE, USA, RUS, CZE, BLR	
Venues:		
Zimny stadion mesta Poprad	Zimny stadion Spisska Nova Ves	
Full Capacity: 4500	Full Capacity:	5500 (3800 seats)
Rink size: 60x29	Rink size:	60x29
Stefanikova 6 058 01 Poprad Slovakia	T. Vansovej 10 052 01 Spisska Nova Ves Slovakia	

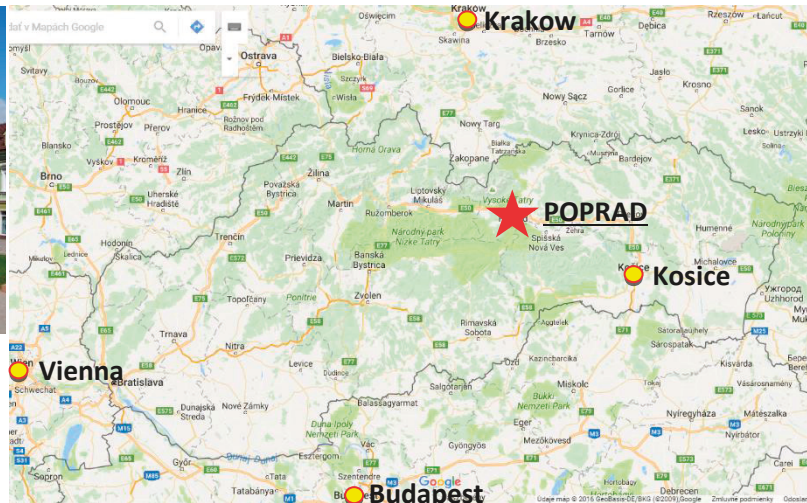


3. City of Poprad

Poprad is a city in northern Slovakia at the foot of the High Tatra Mountains famous for its picturesque historic center and as a holiday resort. It is the biggest town of the Spiš region and the tenth largest city in Slovakia, with a population of approximately 55,000.

It lies at an altitude of 672 meters (2,205 ft) above sea level and covers an area of 63 square kilometers (24.3 sq mi). It is located about 110 kilometers (68 mi) from Košice and 330 kilometers (205 mi) from Bratislava.

The historical center is concentrated around the St. Egidius square, which is surrounded with houses predominantly from the 18th and 19th centuries. Churches in the city include the early-Gothic Catholic Church of St. Egidius from the late 13th century.



3.1. Transport

Direction:	Distance:	Time:
Kosice Airport to Poprad	120km	1h 26m
Krakow Airport to Poprad	158km	2h 16m
Budapest Airport to Poprad	255km	3h 52m

Vienna Airport to Poprad

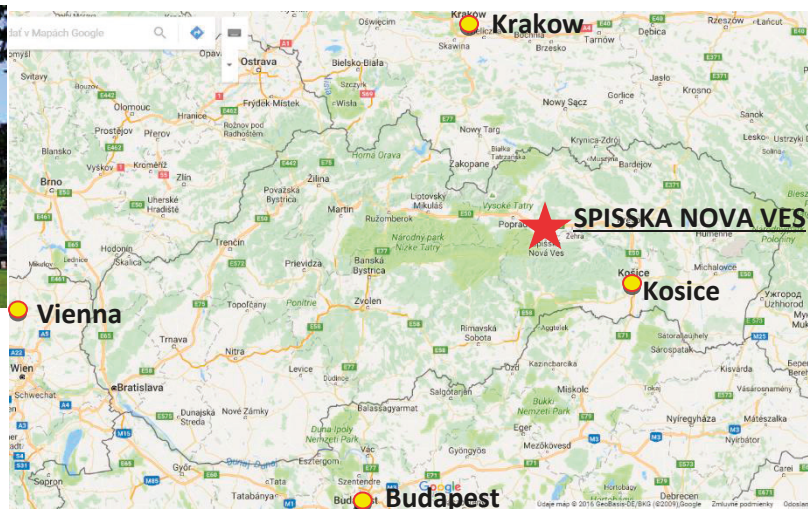
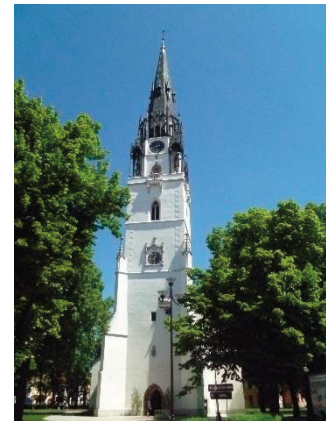
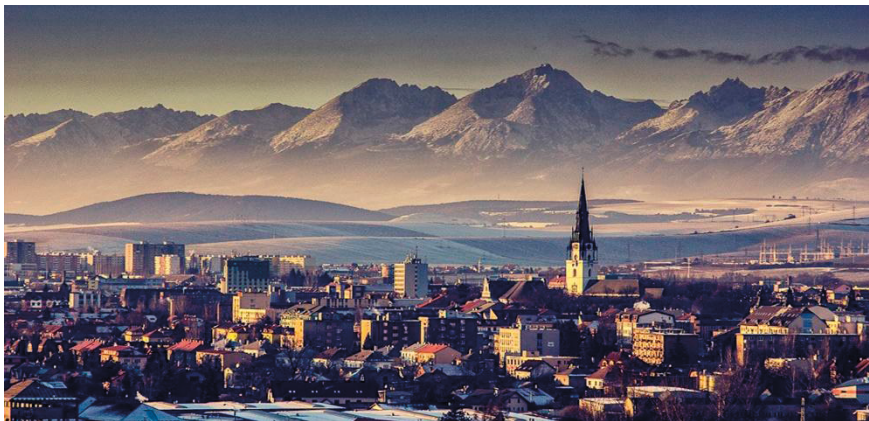
385km

4h 2m

4. City of Spisska Nova Ves

Spisska Nova Ves is a town in the Kosice Region of Slovakia. The town is located southeast of the High Tatras in the Spis region, and lies on both banks of the Hornad River. It is the biggest town of the Spisska Nova Ves District. As of 2006 the population was 38,357.

Tourist attractions nearby include the medieval town of Levoca, Spis Castle and the Slovak Paradise National Park. A biennial music festival, Divertimento musicale, is held here, attracting amateur music ensembles from all over Slovakia.



4.1. Transport

Direction:	Distance:	Time:
Kosice Airport to SNV	82km	1h 23m
Krakov Airport to SNV	179km	2h 32m
Budapest Airport to SNV	283km	4h 4m
Vienna Airport to SNV	410km	4h 12m

5. Accommodation and Services

5.1. Accommodation overview

The teams will be accommodated in hotels nearby the preliminary round venues. The teams will stay in these hotels during the ¼ finals, semifinals and final round games. Grand Hotel Bellevue will serve as the place for the first directorate meeting. OC staff, IIHF staff and IIHF officials will be accommodated in Grand Hotel Bellevue and the referees will stay at Hotel Sobota.

The organizer covers 12 double rooms for players of each team and 6 single rooms for team staff. Teams are asked to confirm the need for extra rooms. The teams rooming list must be received by the OC by 15th March 2017. Any additional rooming needs MUST be received by the OC by 15th October 2016 (e.g. Extra apartments, extra rooms, special needs etc.)

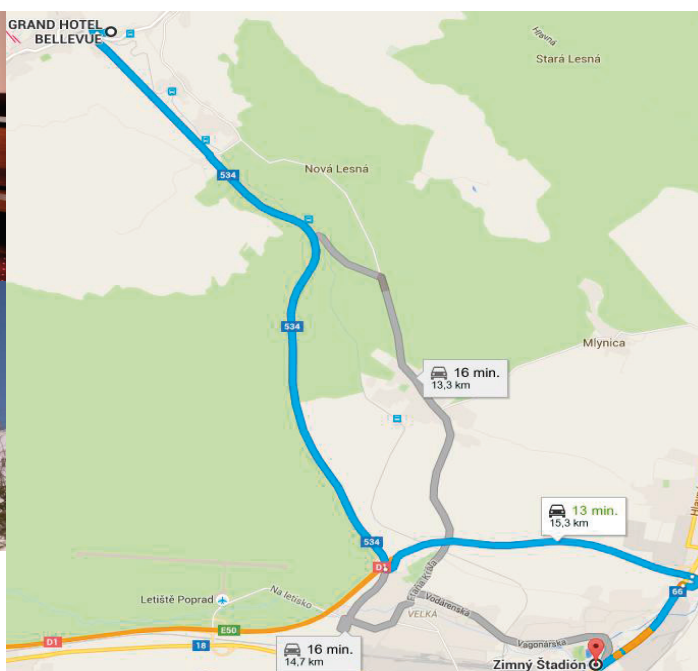
5.2. Grand Hotel Bellevue

GRAND HOTEL BELLEVUE offers you accommodation in tastefully and fashionably furnished and spacious hotel rooms. Family rooms, standard and luxurious suites, barrier-free rooms that provide comfort, space and extraordinary style will satisfy even higher requirements of our guests.

Every room is equipped with a mini bar, a color TV with satellite programs, a phone with the direct dialing choice, high speed internet connection, safe, a hair-dryer and a desk.



Bellevue Hotel to Poprad Ice Arena
Distance: 15,3km
Time: 13min



Horný Smokovec 21
062 01 Vysoké Tatry
Slovakia

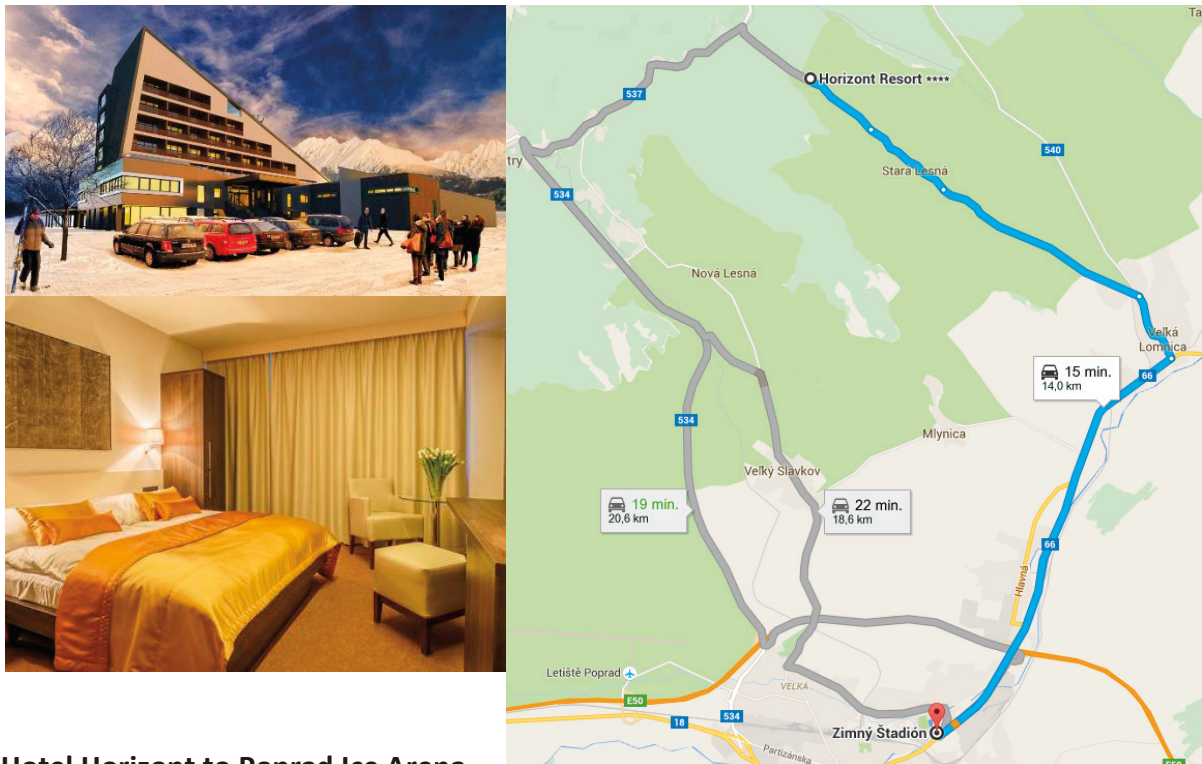
tel: +421/ 52 4762 111
email: hotelbellevue@hotelbellevue.sk
web: <http://www.hotelbellevue.sk/>

Teams: SVK, LAT, FIN + OC Staff, IIHF staff and officials

5.3. Hotel Horizont Resort

If you want to dive into the silence of nature and you desire perfect relaxation and wellness with stunning views of the High Tatras, take advantage of the excellent services in the new Wellness Hotel Horizont in Stará Lesná, which is only two kilometers away from the center of Tatranska Lomnica. The equipment and design of the entire hotel is made of precious natural materials and cedar wood.

The Hotel Horizont Resort has a reception with the booking department, restaurant with a lounge, lobby bar, cognac bar Cigar Lounge, a wine bar with a fireplace, a water bar in the pool, player lounge, children's play area with a playground, multifunctional playground for various sports activities and outside Grill House with a terrace and seating. The hotel has a wellness center with a relaxing pool, whirlpool and water attractions, massage center with spa treatments, Thai massage center and a fitness center.



Hotel Horizont to Poprad Ice Arena
Distance: 14km
Time: 15min

Stará lesná 178
059 60 Tatranská lomnica
Slovakia

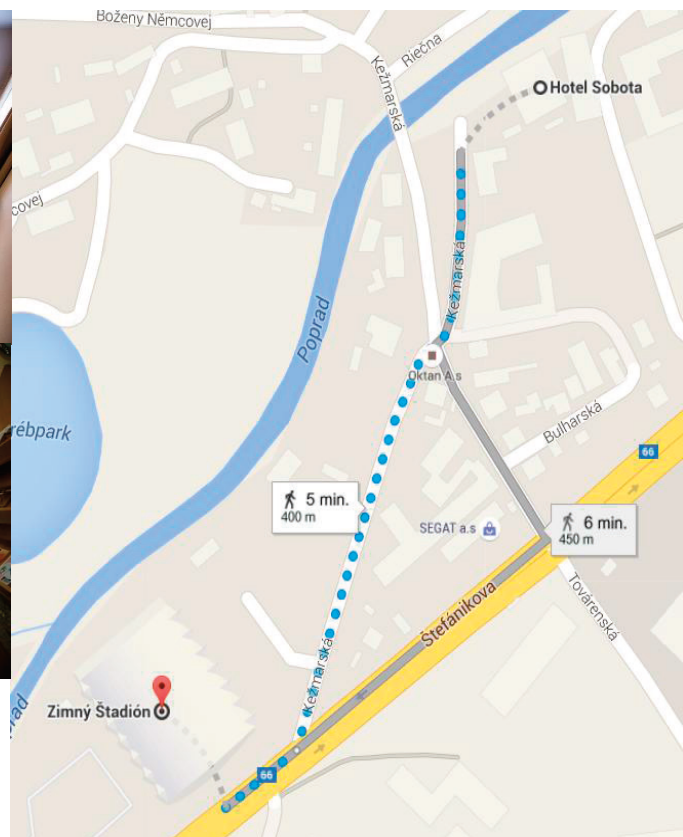
tel: +421/ 52 7851 222
email: recepia@horizontresort.sk
web: <http://www.horizontresort.sk/>

Teams: SUI

5.4. Hotel Sobota

The design of the hotel combines the beauty of wood, stone and metal in the Celtic style to provide stylish hospitality. Spacious rooms with beautiful bathrooms to cater for comfort during your vacation or business trip to Poprad.

Each room is equipped with satellite TV, telephone, safe, bathroom, toilet and shower.



Hotel Sobota to Poprad Ice Arena

Distance: 400m

Time: 5min (walk)

Kezmaraska 15
058 01 Poprad
Slovakia

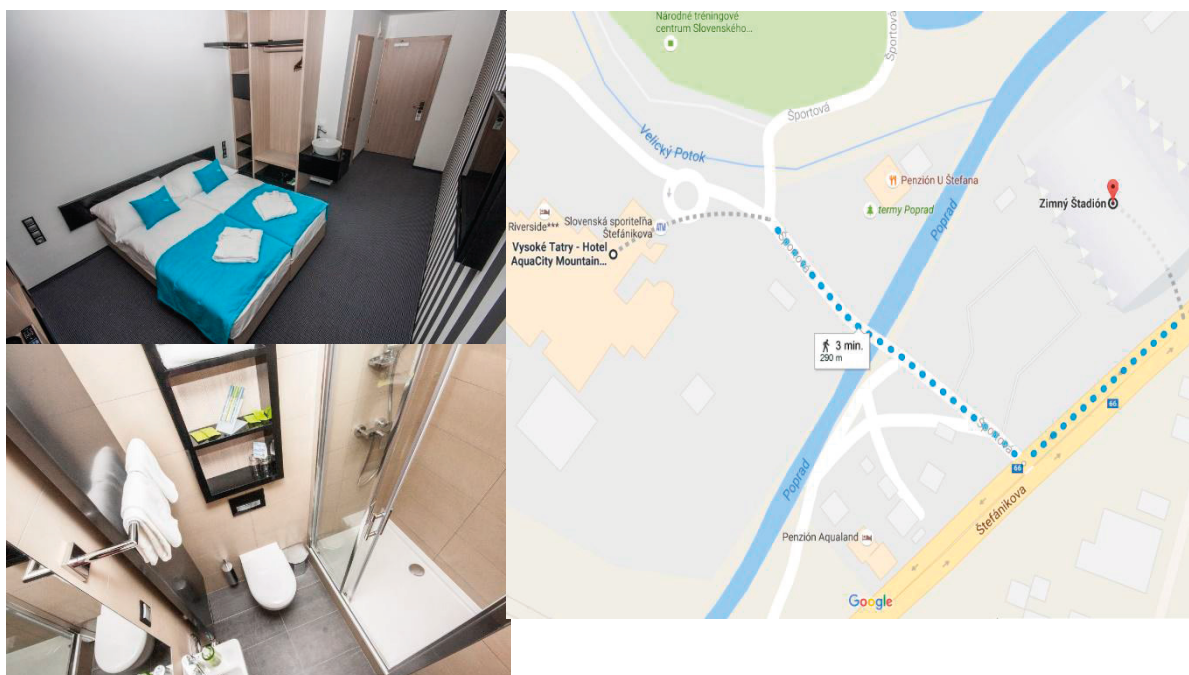
tel: +421/ 52 4663 121
email: recepacia@hotelsobota.sk
web: <http://www.hotelsobota.sk/>

Teams: Referees

5.5. Hotel Aquacity Poprad

The latest addition to our accommodation range is a proud part of the National football training center NTC Poprad and is located just a few steps from all attractions and wellness zones of AquaCity Poprad. This exceptional hotel offers a variety of beautifully decorated rooms, a chic restaurant and a range of other facilities.

Each room is equipped with satellite LCD TV, telephone, WiFi connection, bathroom, toilet and shower, hair dryer, safe, mini bar and coffee set.



Hotel Aquacity to Poprad Ice Arena

Distance: 290m

Time: 3min (walk)

**Sportova 2
058 01 Poprad
Slovakia**

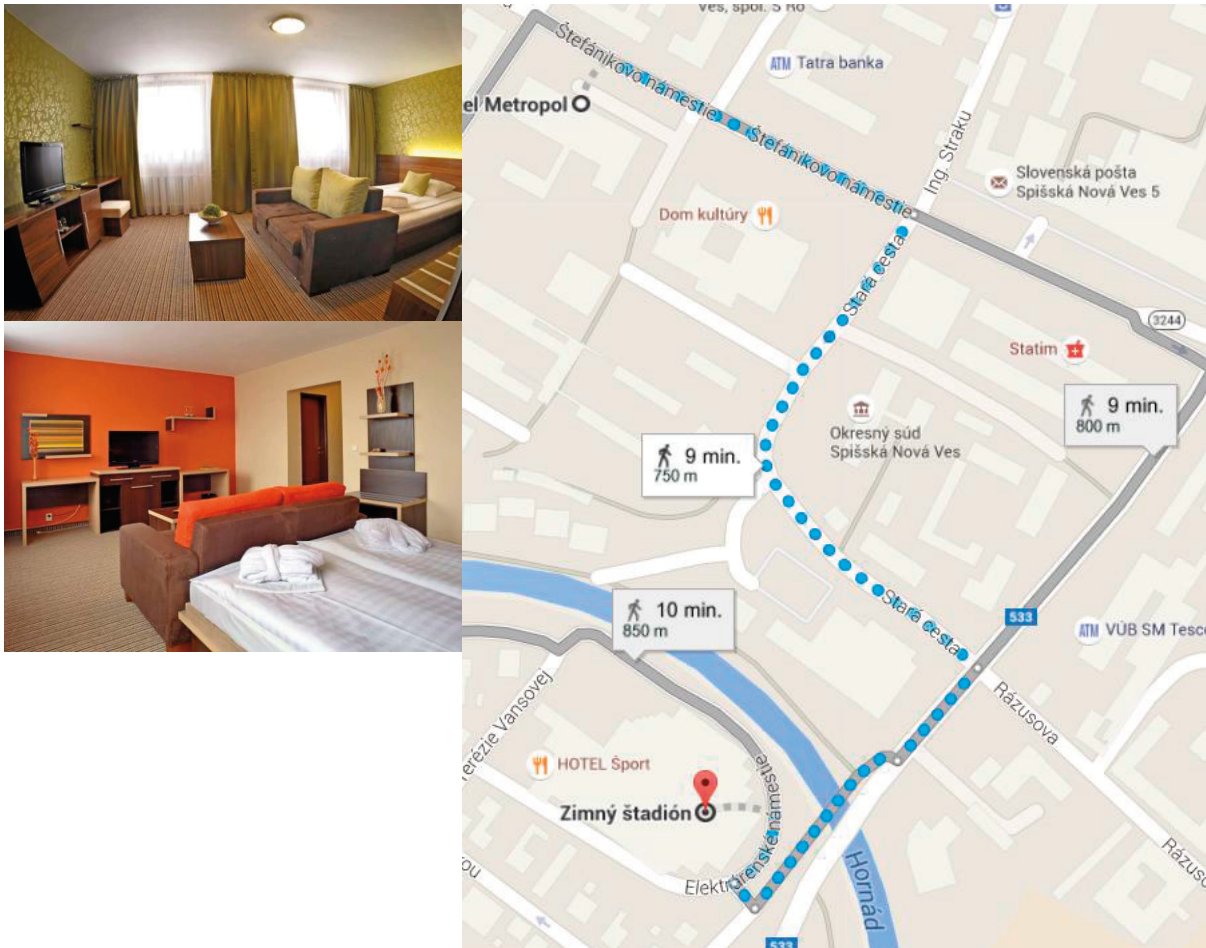
**tel: +421/ 52 7851 888
email: recepia@aquacity.sk
web: <http://www.aquacityhotel.sk/>**

Teams: CAN

5.6. Hotel Metropol

Hotel METROPOL is located in the center of Spišská Nová Ves and offers a comfortable accommodation not only for tourists but also for demanding business clients. All guests have free WiFi internet connection in the restaurant area and in hotel rooms, parking in hotel parking lot.

The hotel rooms have separated bathrooms with bath and toilet, LCD TVs with satellite receivers, telephones, radio-alarms, fridges and WiFi internet connection. Our apartments consist of a separated bedroom, living room and lobby. Hotel rooms offer a beautiful view of High Tatras mountain range.



Hotel Metropol to Spisska Nova Ves Ice Arena

Distance: 750m

Time: 9min (walk)

**Stefanikovo namestie 2
052 01 Spisska Nova Ves
Slovakia**

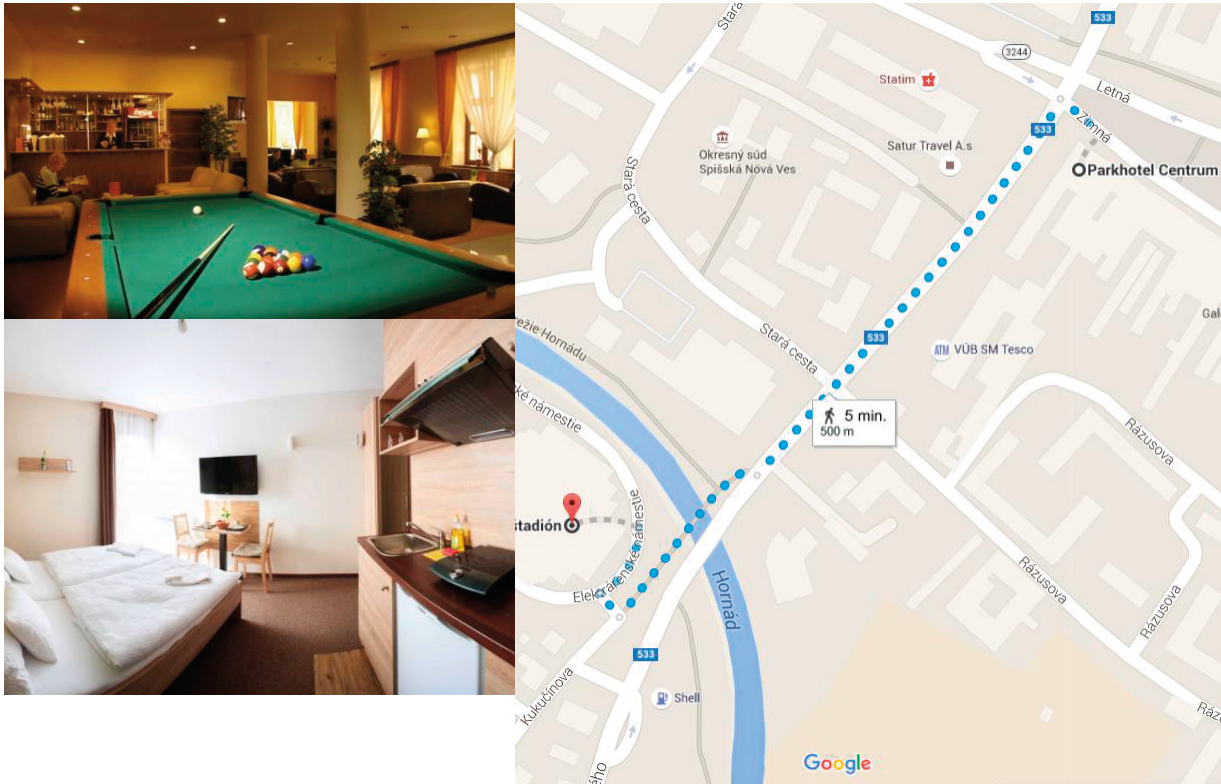
Teams:

**tel: +421/ 53 4174 700
email: recepia@hotel-metropol.sk
web: <http://www.hotel-metropol.sk>
RUS, SWE**

5.7. Parkhotel Centrum

The hotel is situated in the center, on the boundary of a historical zone of the square in Spišská Nova Ves, 10 minute walk from the bus and railway station.

The hotel provides comfortable accommodation exceeding the standard of a 3 star hotel. Bathroom, WC, hair drier, satellite TV, minibar, telephone and internet are part of the rooms.



Parkhotel Centrum to Spišská Nova Ves Ice Arena

Distance: 500m

Time: 5min (walk)

Zimna 34
052 01 Spišská Nova Ves
Slovakia

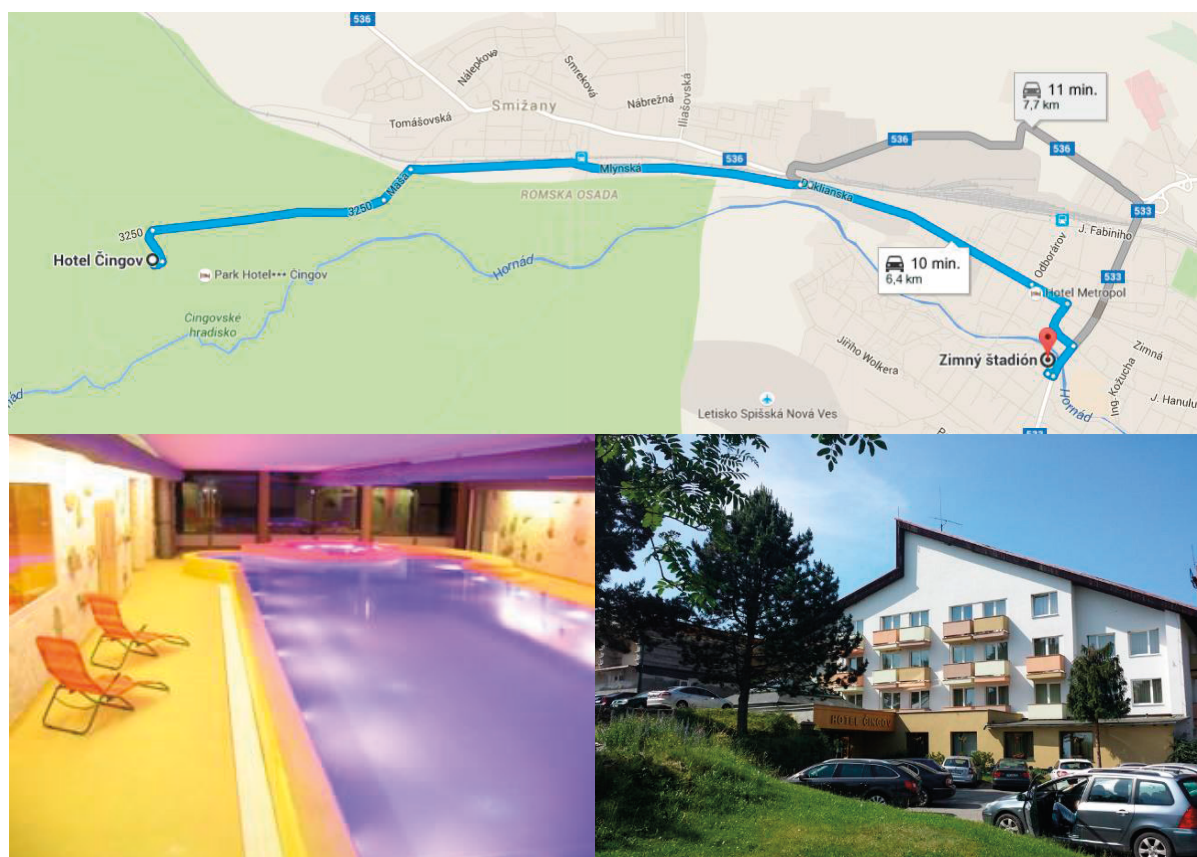
tel: +421/ 53 4150 811
email: recepacia@parkhotelcentrum.sk
web: <http://www.parkhotelcentrum.sk>

Teams: USA

5.8. Hotel Čingov

Hotel Čingov is situated near Spišská Nová Ves city, in locality called Čingov a famous entrance gate to national park Slovak paradise. Hotel Čingov is approximately 20 km away from the airport in Poprad and 80 km away from the airport in Košice.

Each room at hotel Čingov is equipped with bathroom, with shower or bath and toilet, TV with satellite channels, telephone and refrigerator. The hotel facilities also include a wellness center.



Hotel Čingov to Spišská Nová Ves Ice Arena

Distance: 6,4km

Time: 10min

Hotel Čingov
053 11 Smižany
Slovakia

tel: +421/ 53 4433 663
email: hotelcingov@hotelcingov.sk
web: <http://www.hotelcingov.sk/>

Teams: CZE

5.9. Parkhotel Cingov

PARK Hotel Cingov can be found in the picturesque surroundings of Čingov – Hradisko, the gateway to the Slovak Paradise National Park. The Park and its 220 km of marked tourist paths lead you to virgin countryside of wild rocks and canyons with numerous wonderful waterfalls and natural scenery.

The hotel offers its guests comfortable accommodation in 20 double rooms with balconies giving beautiful views of the panorama of the Slovak Paradise and the nearby High Tatra Mountains. Each room has en suite facilities, satellite TV, radio and telephone.



Park Hotel Cingov to Spisska Nova Ves Ice Arena

Distance: 6,6km

Time: 11min

Cingov - Hradisko

053 11 Smizany

Slovakia

Teams:

tel: +421/ 53 4422 022

email: repcia@parkhotelcingov.sk

web: <http://www.parkhotelcingov.sk>

BLR

6. Transportation

6.1. Team Arrival and Team Hosts

After receiving the travel plans from teams, organizers will make arrangements to have a team host to meet the team at the airport with a bus and a truck for equipment. On site, the teams will have a team host to help with daily errands and work together with the OC office, team service and hotels. The team host for each team will be named in March.

6.2. Transportation

When arriving at the airport and departing from the event, the teams will have their team host, team bus and truck for team gear at their disposal. Teams will have a bus in use during the tournament. The teams will also have a car to help transport managers, equipment and to run other daily errands with the team host.

Referees and referee supervisors will have van service in both venues. IIHF photographers, result managers, video goal judges and other staff working in the arenas will also have van service available in specific times.

7. Services

7.1. Ticketing

Each participating team will receive 23 complimentary tickets for each game that they participate in. Should you wish to purchase additional tickets, please contact the OC.

Tickets will be handed to the teams during the first Directorate meeting.

7.2. Accreditation

All participants will receive credentials upon move-in to the venues on April 12, 2017. Credentials must be worn at all times while in the game and practice venues. Please submit all team credential requests and headshots through the IIHF Long list (TEL) system which will be made available to teams prior to the championship.

7.3. Video Distribution

Each team will receive 1 copy of its own game following the game free of charge. If requested, additional game DVDs/Flash drives may be ordered through the team's team host and will be available within 24 hours after the requested game has been finished at the cost of €20.

7.4. Electricity

Electricity voltage in Slovakia is limited to 220 – 240 volts, 50-60 Hz

Socket:



Plug:



7.5. Team Service

Team service will be organized in accordance to the IIHF Sport Regulations.

Teams are asked to prepare with two sets of undergarments for each play. Each team is provided with towels for each ice session. The more detailed laundry schedule and procedure in both venues will be provided to teams upon arrival.

Both arenas have a dedicated room for team equipment managers to share for skate sharpening. Teams are asked to check with players that the equipment used follows the IIHF Sport Regulations.

Organizer will use tap water for all purposes in the championship, excluding the penalty box water during games when water from sealed bottles will be used. Tap water in Slovakia is well tested and monitored.

Each team will also receive fruit prior to each game and practice.

8. Medical Support Service

On-ice medical support service will be available during each game and will be provided by the company Falck Emergency, a.s. There will be an emergency vehicle ready at all times with a team.

In each venue, there is an emergency first-aid room, which will be shown to you by your team host.

The team doctor can go on the ice in case of an injury, if additional help is requested, the international sign of crossed hands above head has to be used.

Nearest hospital – Poprad

- **Hospital of Poprad a.s.**, Banícka 803/28 , Poprad
- **1.5km from arena**
- Department of Trauma surgery
- Orthopedics
- Anesthesiology and Intensive care
- Internal , Pediatric
- Radiology, CT, MR
- Neurosurgery department



Nearest hospital – Spišská nova ves

- **Svet zdravia, a.s.**, Jána Janského, Spišská Nová Ves
- **2.0km from arena**
- Department of Surgery
- Anesthesiology and Intensive Care
- Internal , Pediatric
- Radiology, CT, MR
- Neurosurgery in Prešov and Košice, transport by helicopter



Falck

9. Pre-event and Directorate meetings

The organizer will keep in contact with the teams to serve all team's needs in the best possible way.

The teams are asked to:

- By September 30th Inform the OC of hotel room needs and training camp needs
- By October 31st Confirm hotel floor plan and room use
- By November 30th Confirm menu plan in the hotel
- By January 15th Confirm team travel plan, arrival and departure times
- By February 1st Send team photo, team information and headshots of players
- By March 15th Send team preliminary day schedule
- By March 15th Send team rooming list

All teams have to participate in the pre-event meetings. Please plan your arrival to the Championship site according to the meeting schedule. Also, please remember to bring your passport copies to the first directorate meeting. All meeting on the 12th April will take place in Grand Hotel Bellevue.

<i>Meeting</i>	<i>Date</i>	<i>Time</i>	<i>Place</i>
Medical Personnel meeting	April 12	16:00	Bellevue
TRIM meeting	April 12	16:30	Bellevue
Passport Control	April 12	16:30	Bellevue
Directorate #1	April 12	18:00	Bellevue
Directorate #2	April 14	22:30	TBA
Directorate #3	April 16	22:30	TBA
Directorate #4	April 18	22:30	TBA
Directorate #5	April 20	22:30	TBA
Directorate #6	April 22	22:30	TBA
Directorate #7	April 23	TBA	TBA

10. Game Information

10.1. Training Camp

The teams are asked to contact the organizer to make reservations for pre championship training camp and games. The OC will not cover the costs of pre event training camps. All expenses are covered by the teams.

The OC will help arrange the pre event games, while the schedule and venue will be confirmed once the last team has communicated their wishes, latest by **September 30th**.

10.2. Practice schedule

Day	Date	Team	Time	Venue	Team	Time	Venue
PRE EVENT	Wednesday April 12, 2017	REF *	11:45-12:45	Poprad			
		CAN	13:00-14:00	Poprad	BLR	13:00-14:00	Spisska N. Ves
		LAT	14:15-15:15	Poprad	USA	14:15-15:15	Spisska N. Ves
		FIN	15:30-16:30	Poprad	SWE	15:30-16:30	Spisska N. Ves
		SVK	16:45-17:45	Poprad	RUS	16:45-17:45	Spisska N. Ves
		SUI	18:00-19:00	Poprad	CZE	18:00-19:00	Spisska N. Ves
1	Thursday April 13, 2017	REF *	07:00-08:00	Poprad			
		CAN	09:00-09:30	Poprad	USA	09:00-09:30	Spisska N. Ves
		LAT	09:45-10:15	Poprad	BLR	09:45-10:15	Spisska N. Ves
		FIN	10:30-11:00	Poprad	SWE	10:30-11:00	Spisska N. Ves
		SVK	11:15-11:45	Poprad	RUS	11:15-11:45	Spisska N. Ves
		SUI	12:00-13:00	Poprad	CZE	12:00-13:00	Spisska N. Ves
2	Friday April 14, 2017	REF *	07:00-08:00	Poprad			
		LAT	09:30-10:00	Poprad	BLR	09:30-10:00	Spisska N. Ves
		SUI	10:15-10:45	Poprad	CZE	10:15-10:45	Spisska N. Ves
		CAN	14:00-15:00	Poprad	USA	14:00-15:00	Spisska N. Ves
		FIN	15:15-16:15	Poprad	RUS	15:15-16:15	Spisska N. Ves
		SVK	16:30-17:30	Poprad	SWE	16:30-17:30	Spisska N. Ves
3	Saturday April 15, 2017	REF *	07:00-08:00	Poprad			
		SUI	09:00-09:30	Poprad	RUS	09:00-09:30	Spisska N. Ves
		FIN	09:45-10:15	Poprad	USA	09:45-10:15	Spisska N. Ves
		SVK	10:30-11:00	Poprad	CZE	10:30-11:00	Spisska N. Ves
		CAN	11:15-11:45	Poprad	SWE	11:15-11:45	Spisska N. Ves
		LAT	12:00-13:00	Poprad	BLR	12:00-13:00	Spisska N. Ves
4	Sunday April 16, 2017	REF *	07:00-08:00	Poprad			
		FIN	09:30-10:00	Poprad	SWE	09:30-10:00	Spisska N. Ves
		LAT	10:15-10:45	Poprad	BLR	10:15-10:45	Spisska N. Ves
		SUI	14:00-15:00	Poprad	RUS	14:00-15:00	Spisska N. Ves
		SVK	15:15-16:15	Poprad	USA	15:15-16:15	Spisska N. Ves
		CAN	16:30-17:30	Poprad	CZE	16:30-17:30	Spisska N. Ves
5	Monday April 17, 2017	REF *	07:00-08:00	Poprad			
		SUI	09:00-09:30	Poprad	CZE	09:00-09:30	Spisska N. Ves
		CAN	09:45-10:15	Poprad	USA	09:45-10:15	Spisska N. Ves
		LAT	10:30-11:00	Poprad	BLR	10:30-11:00	Spisska N. Ves
		SVK	11:15-11:45	Poprad	RUS	11:15-11:45	Spisska N. Ves
		FIN	12:00-13:00	Poprad	SWE	12:00-13:00	Spisska N. Ves
6	Tuesday April 18, 2017	REF *	07:00-08:00	Poprad			
		CAN	09:00-09:30	Poprad	CZE	09:00-09:30	Spisska N. Ves
		FIN	09:45-10:15	Poprad	USA	09:45-10:15	Spisska N. Ves
		SVK	10:30-11:00	Poprad	BLR	10:30-11:00	Spisska N. Ves
		SUI	11:15-11:45	Poprad	RUS	11:15-11:45	Spisska N. Ves
		LAT	12:00-13:00	Poprad	SWE	12:00-13:00	Spisska N. Ves

DAY OFF	Wednesday April 19, 2017	REF *	07:00-08:00	Poprad	5B	09:00-10:00	Spisska N. Ves
		1A	10:00-11:00	Poprad	2B	10:15-11:15	Spisska N. Ves
		2A	11:15-12:15	Poprad	1B	11:30-12:30	Spisska N. Ves
		3B	15:00-16:00	Poprad	5A	15:00-16:00	Spisska N. Ves
		4B	16:15-17:15	Poprad	3A	16:15-17:15	Spisska N. Ves
					4A	17:30-18:30	Spisska N. Ves
8	Thursday April 20, 2017	REF *	07:00-08:00	Poprad			
		4B	08:30-09:00	Poprad	3A	07:00-07:30	Spisska N. Ves
		1A	09:15-09:45	Poprad	2B	07:45-08:15	Spisska N. Ves
		3B	10:00-10:30	Poprad	4A	08:30-09:00	Spisska N. Ves
		2A	10:45-11:15	Poprad	1B	09:15-09:45	Spisska N. Ves
9	Friday April 21, 2017	REF *	07:00-08:00	Poprad			
		W23	10:00-11:00	Poprad	REL. 1	09:00-09:30	Spisska N. Ves
		W22	11:15-12:15	Poprad	REL. 2	09:45-10:15	Spisska N. Ves
		W24	12:30-13:30	Poprad			Spisska N. Ves
		W25	13:45-14:45	Poprad			
10	Saturday April 22, 2017	REF *	07:00-08:00	Poprad			
		W23	09:00-09:45	Poprad	REL. 1	10:00-11:00	Spisska N. Ves
		W22	10:00-10:45	Poprad	REL. 2	11:15-12:15	Spisska N. Ves
		W24	11:00-11:45	Poprad			
		W25	12:00-12:45	Poprad			
11	Sunday April 23, 2017	REF *	07:00-08:00	Poprad	REL. 2	08:00-08:30	Spisska N. Ves
		L28	08:30-09:00	Poprad	REL. 1	08:45-09:15	Spisska N. Ves
		L29	09:15-09:45	Poprad			
		W28	10:00-10:30	Poprad			
		W27	10:45-11:15	Poprad			

REF* - subject to change if needed

10.3. Game schedule

Day	Date	Group	Time *	Venue	Game No.	Home & Guest Team
1	Thursday April 13, 2017	A	15:30	Poprad	1	LAT - CAN
		B	15:30	Spisska Nova Ves	2	BLR - USA
		A	19:30	Poprad	3	SVK - FIN
		B	19:30	Spisska Nova Ves	4	RUS - SWE
2	Friday April 14, 2017	A	19:30	Poprad	5	SUI - LAT
		B	19:30	Spisska Nova Ves	6	CZE - BLR
3	Saturday April 15, 2017	A	15:30	Poprad	7	FIN - SUI
		B	15:30	Spisska Nova Ves	8	USA - RUS
		A	19:30	Poprad	9	CAN - SVK
		B	19:30	Spisska Nova Ves	10	SWE - CZE
4	Sunday April 16, 2017	A	19:30	Poprad	11	LAT - FIN
		B	19:30	Spisska Nova Ves	12	BLR - SWE
5	Monday April 17, 2017	A	15:30	Poprad	13	CAN - SUI
		B	15:30	Spisska Nova Ves	14	USA - CZE
		A	19:30	Poprad	15	SVK - LAT
		B	19:30	Spisska Nova Ves	16	RUS - BLR
6	Tuesday April 18, 2017	A	15:30	Poprad	17	FIN - CAN
		B	15:30	Spisska Nova Ves	18	SWE - USA
		A	19:30	Poprad	19	SUI - SVK
		B	19:30	Spisska Nova Ves	20	CZE - RUS
7	Wednesday April 19, 2017	Day Off				
8	Thursday April 20, 2017	REL 1	11:30	Spisska Nova Ves	21	5A - 5B
		QF1 **	13:30	Poprad	22	1A - 4B
		QF2	15:30	Spisska Nova Ves	23	2B - 3A
		QF3 **	17:30	Poprad	24	2A - 3B
		QF4	19:30	Spisska Nova Ves	25	1B - 4A
9	Friday April 21, 2017	REL 2	17:30	Spisska Nova Ves	26	5B - 5A
10	Saturday April 22, 2017	SF1 **	15:30	Poprad	27	W22 - W23
		SF2 **	19:30	Poprad	28	W25 - W24
11	Sunday April 23, 2017	REL 3 ***	13:30	Spisska Nova Ves	29	(5A - 5B)
		Bronze Medal	15:30	Poprad	30	L27 - L28
		Gold Medal	19:30	Poprad	31	W27 - W28
Notes:						
* Local time						
** If Slovakia is playing QF, then they should play in Poprad at 17:00						
** If Slovakia is playing SF, then they should play in Poprad at 13:00						
*** If needed						

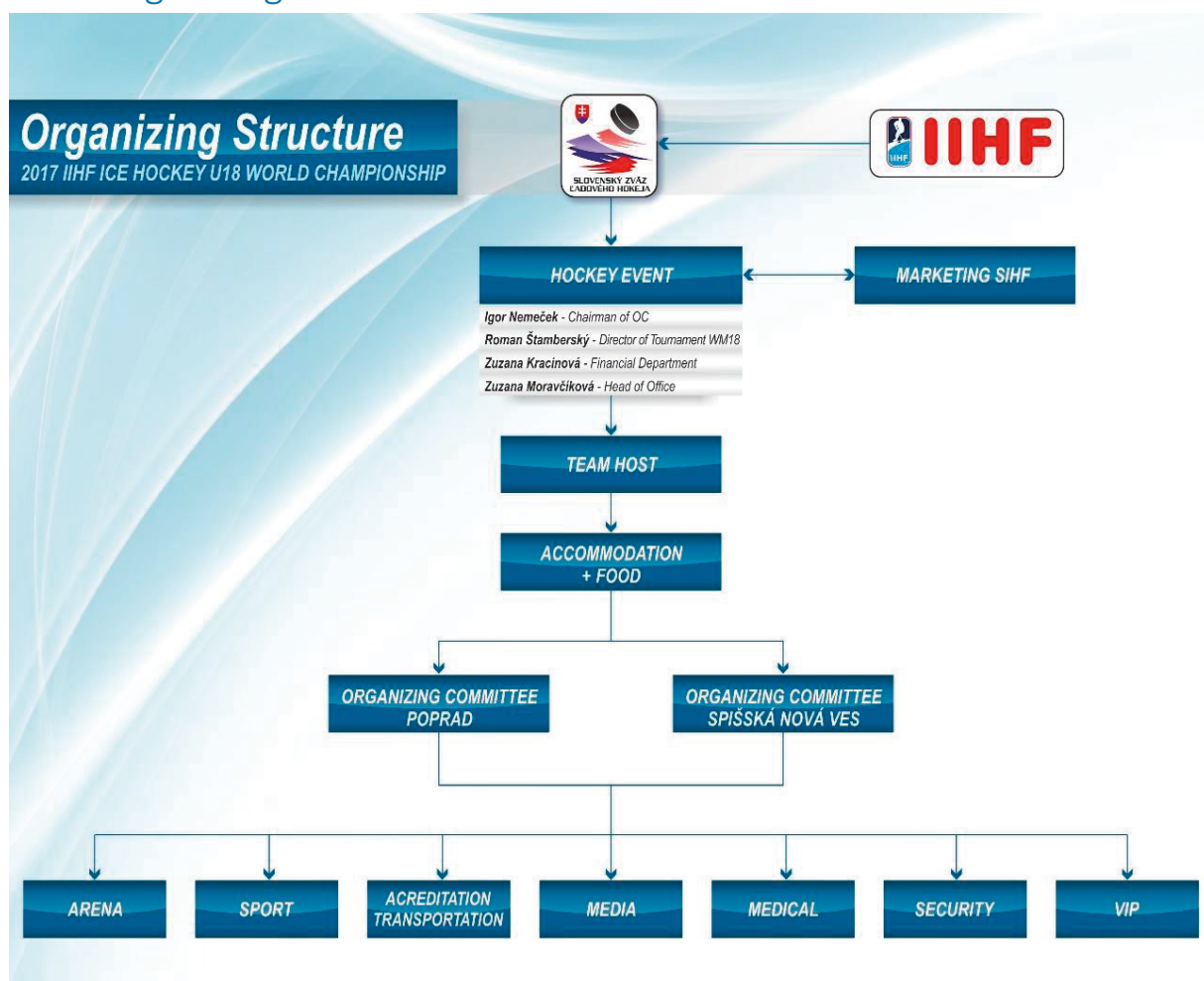
10.4. Awards

Cups and awards will be presented by event dignitaries and IIHF representatives during the closing ceremony, following the championship game.

Other awards include:

- A) Best players (Goalkeeper, Defense, Forward) in the championship; the directorate award
- B) Player of the game of each team, for each game as selected by team staff members
- C) Best players of each team in the championship as selected by team staff members

11. Organizing committee & contact information



Mailing address prior to the event:

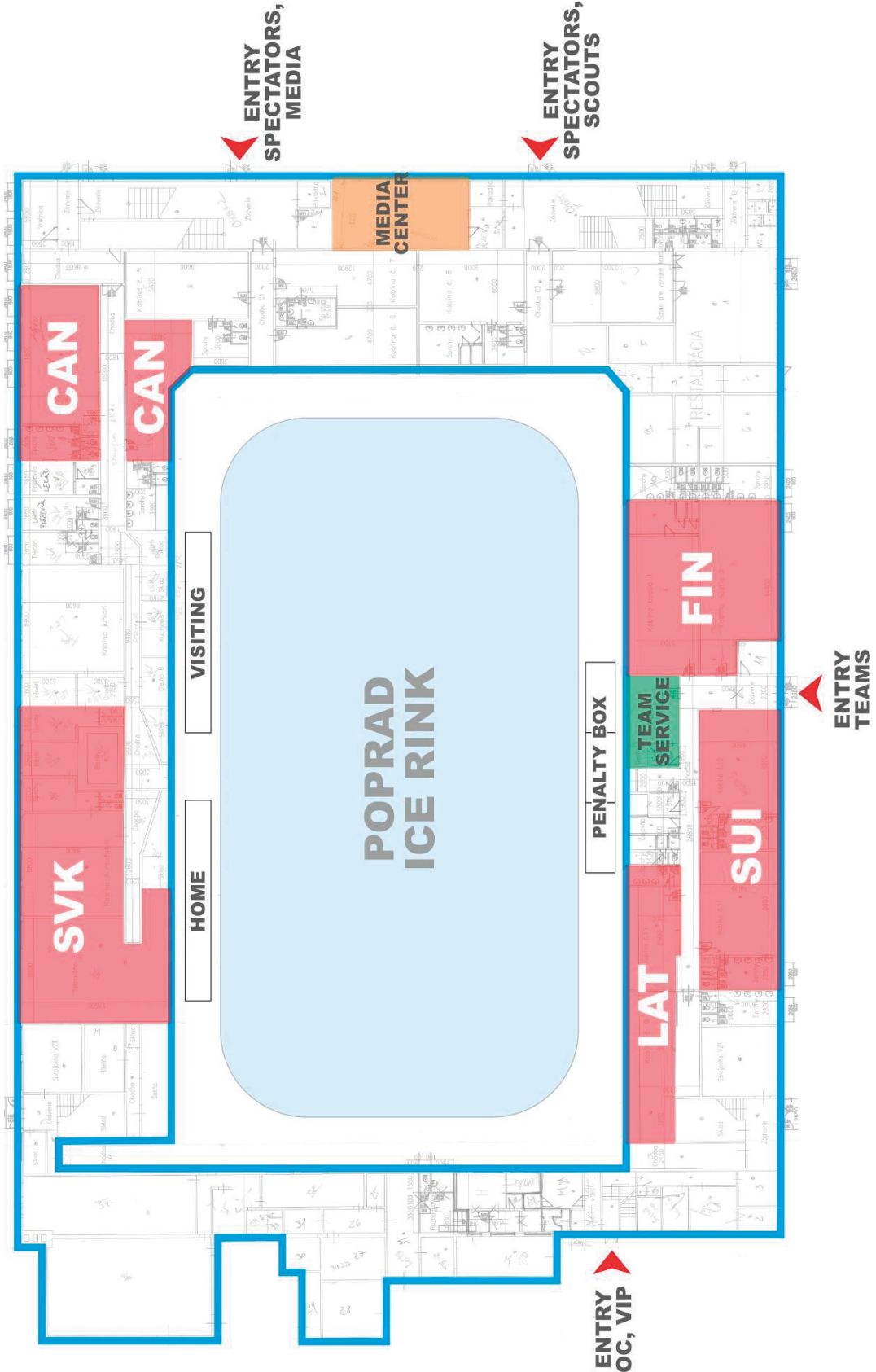
2017 IIHF Ice Hockey U18 World Championship
Slovak Ice Hockey Federation
Trnavska cesta 27/B
831 04 Bratislava

Main office:

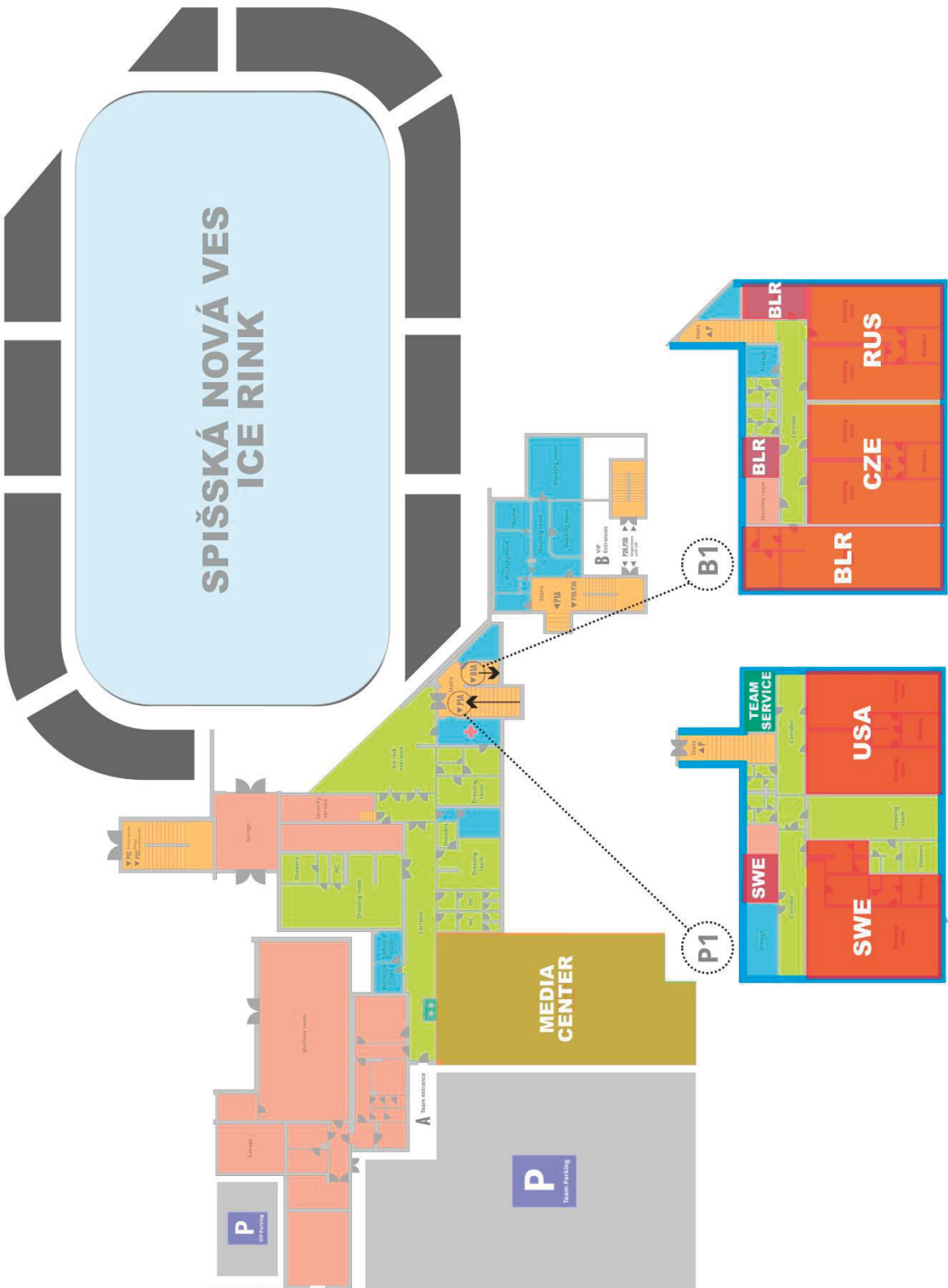
Mrs. Zuzana Moravcikova
Head of Administration
moravcikova@szlh.sk
+421 918 234 XXX

12. Arena Maps & Layout

Ice arena layout – Poprad (PPA)



Ice arena layout – Spisska nova ves (SNV)





**SLOVAK ICE HOCKEY
FEDERATION**